

Reno

HEAT ONLY SERIES

*High Efficiency
Heat Only
Boilers*



USERS INSTRUCTIONS

Natural Gas G20:

Reno HE16H - GC No: 41-416-07

Reno HE25H - GC No: 41-416-03

Reno HE31H - GC No. 41-416-06

Propane G31 Variant:

Reno HE16HP - GC No: 41-416-11

Reno HE25HP - GC No: 41-416-13

Reno HE31HP - GC No. 41-416-10



The Johnson & Starley Reno range has an energy rating A on a scale of A to G. For more information see www.boilers.org.uk This is a certification mark.

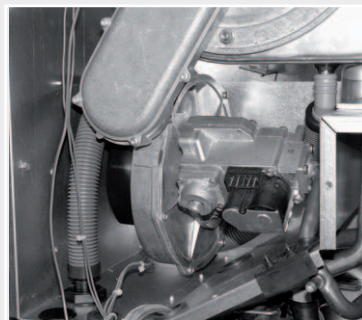
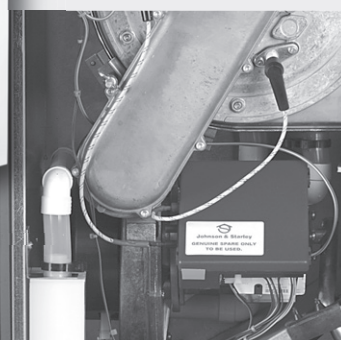
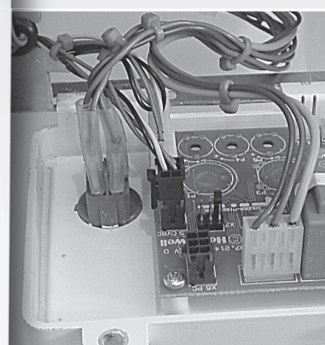
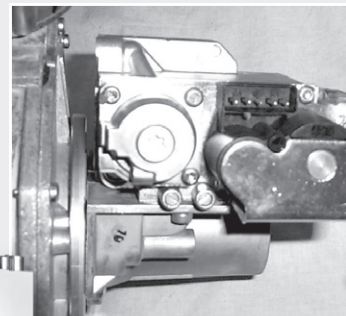
RELIABILITY YOU CAN TRUST

www.johnsonandstarley.co.uk

Reno

HEAT ONLY SERIES

High Efficiency Heat Only Boilers



THE BENCHMARK SCHEME

In order to comply with Building Regulations Part L (Part J in Scotland) the boiler MUST be fitted in accordance with the manufacturer's instructions.

Benchmark places responsibilities on both manufacturers and installers. The purpose is to ensure that customers are provided with the correct equipment for their needs, that it is installed, commissioned and serviced in accordance with the manufacturer's instructions by competent persons and that it meets the requirements of the appropriate Building Regulations. The Benchmark Checklist can be used to demonstrate compliance with Building Regulations and should be provided to the customer for future reference.

Installers are required to carry out installation, commissioning and servicing work in accordance with the Benchmark Code of Practice which is available from the Heating and Hotwater Industry Council who manage and promote the Scheme.

Visit www.centralheating.co.uk for more information.



CONTENTS

Benchmark Scheme	2
1. General Information	4
2. Layout of the User Panel	4
3. Initial Lighting	5
4. Operation of Boiler	5
5. Reset Function	5
6. Error Codes	5
7. Flame Loss	5
8. Boiler Overheating	6
9. Condensate Drain	6
10. Servicing & Maintenance	6
11. Escape of Gas	6
12. Cleaning the Appliance	6
13. Notes	7

1. GENERAL INFORMATION

Part of the installation and commissioning of this appliance is related to instructions for use by the heating engineer to the user where specific requirements may occur, see note below.

This appliance is not intended for use by persons (including children) with reduced physical, sensory or mental capabilities, or lack of experience and knowledge, unless they have been given supervision or instruction concerning use of the appliance by a person responsible for their safety.

2. LAYOUT OF THE USER DISPLAY

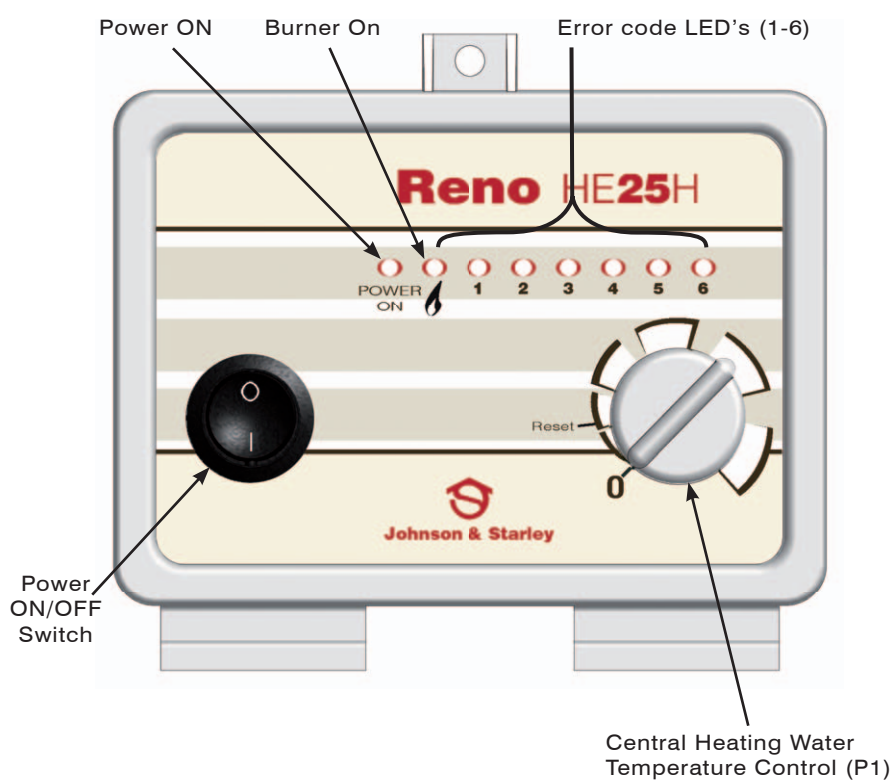


FIGURE 1
USER CONTROL PANEL

3. INITIAL LIGHTING

If turning on the boiler for the first time carry out the following steps:

- ◆ Check that the electrical supply to the boiler is ON at the external isolator.
- ◆ Ensure all hot taps are closed.
- ◆ Set any remote controls as required.
- ◆ Turn the CH control P1 to the minimum setting. Switch on the appliance at the on/off switch on the control panel. The boiler will then be in the STANDBY mode.

Only operate the boiler when you are sure that the system has been correctly filled and vented. If you are in any doubt about the boiler being filled with water contact your installer.

4. OPERATION OF THE BOILER

In order to turn on the central heating and adjust the temperature, turn the control knob P1 to the desired setting between off and maximum 82°C.

If the boiler is not required for an extended period turn the control knob P1 fully anti clockwise to the off position. In this position the frost protection will still be active.

5. RESET FUNCTION

Should a fault occur, tuRning the central heating water temperature control knob P1 to RESET will clear the error and enable the boiler to relight. If the fault recurs, turn off the boiler and consult a CORGI registered installer.

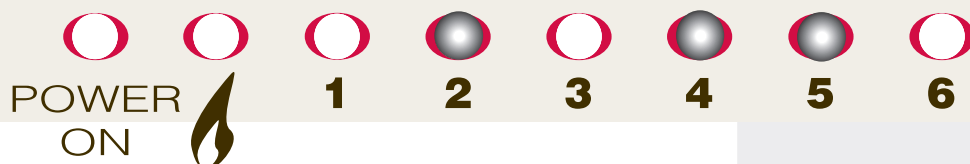
6. ERROR CODES

Detailed on page 3 are error codes that you may encounter on your boiler. For any sequences not illustrated, please refer to your Installation & Maintenance Instructions or contact your local CORGI registered installer.

7. FLAME LOSS

Should the flame signal be lost 5 times in any 4 minute period the boiler will lockout and an error code will be displayed on the series of LED's as displayed below. Turning the central heating water temperature control (P1) to the OFF position and then back on again, will clear the error and enable the boiler to relight

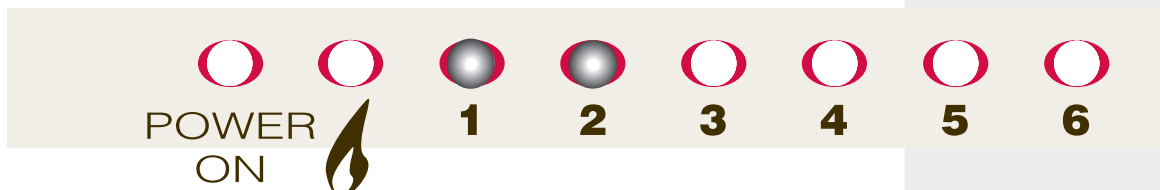
If the fault recurs, turn off the boiler and consult a CORGI registered installer.



8. BOILER OVERHEATING

In the event of the boiler overheating the boiler will lockout and an error code will be displayed in the series of LED's as detailed below. Turning the central heating water temperature control P1 to the OFF position and then back on again will clear the error and enable the boiler to relight.

If the fault recurs, turn off the boiler and consult a CORGI registered installer.



9. CONDENSATE DRAIN

The condensate drain must not be modified or blocked.

Blockage of the condensate drain caused by debris or freezing, can cause the boiler to lockout.

If freezing is suspected and the pipe run is accessible, then an attempt to free the obstruction by pouring hot water on to the pipe may be made. If this fails to remedy the problem, the assistance of a CORGI registered installer should be sought.

10. SERVICE & MAINTENANCE

It is recommended that a full maintenance check be carried out annually on the appliance. It is also recommended to take out a further service agreement on the expiry of the guarantee period.

You can obtain further information on this from your gas supplier.

The appliance should be checked /serviced by a CORGI registered installer.

If you require service on your appliance please contact your local installer or gas supplier.

On completion of the service the installer should fill in the service section at the rear of the BENCHMARK log book. All installers registered with CORGI carry an identification card. This card will have an ID number which should be recorded in your logbook.

If you have any queries regarding your installer you can contact CORGI by telephone on 01256 372400.

11. ESCAPE OF GAS

Should a gas leak be suspected contact your gas supplier without delay.

Do not search for leak with a naked flame.

12. CLEANING THE APPLIANCE

The appliance casing should only be cleaned with a damp cloth then dried.

Do not use abrasive or solvent cleaners.



Johnson & Starley

Johnson & Starley are the leading UK & European manufacturers of a complete range of **Domestic Warm Air Heaters**.

All the heaters suit both **Replacement** and **Upgrade** needs and are compliant with the new (2006) amendments to Part L of the Building Regulations.

HOME COMFORT SOLUTIONS

Company Details

Website Address	www.johnsonandstarley.co.uk
Email	sales@johnsonandstarley.co.uk marketing@johnsonandstarley.co.uk
Telephone Number	01604 762881 (Main switchboard)
Fax Number	01604 767408

Spares

Telephone	01604 707012
Fax	01604 762884

Sales

Telephone	01604 707012
Fax	01604 764879

Service

Telephone	01604 707011
Fax	01604 707017

Warm Air Upgrade Enquiry Service

Telephone	01604 707026
Fax	01604 707017

COMMERCIAL & INDUSTRIAL H&V SOLUTIONS



Company Details

Johnson & Starley	Dravo Division Industrial H&V
Website Address	www.dravo.co.uk
Email	dravo@johnsonandstarley.co.uk
Telephone Number	01604 707022
Fax Number	01604 706467



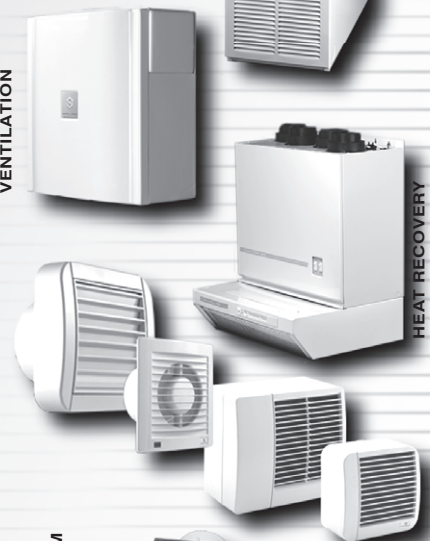
RENO BOILER RANGE

RENOXTRA

ECONOMAIRE WARM AIR HEATERS

HI-SPEC WARM AIR HEATERS

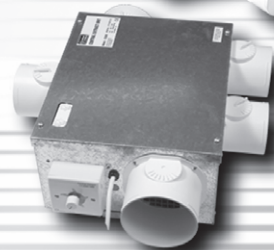
HOME 'N' DRY VENTILATION



HEAT RECOVERY

DRYFLOW

CENTRAL EXTRACT VENTILATION SYSTEM



DRAVO

RELIABILITY YOU CAN TRUST

www.johnsonandstarley.co.uk