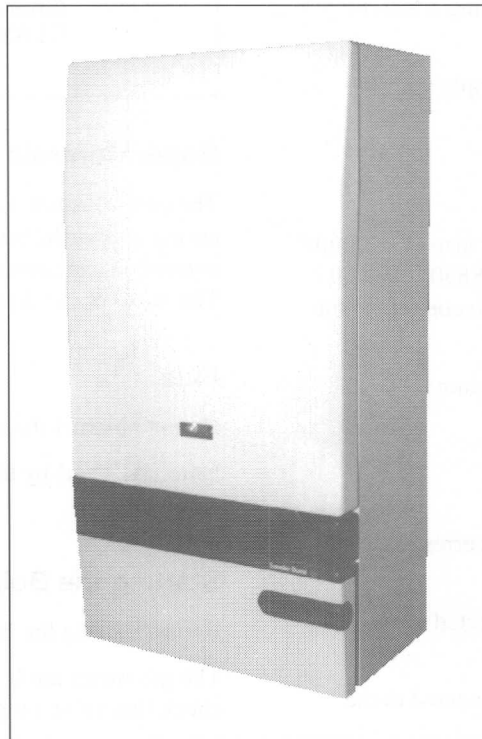


Saunier Duval

INSTRUCTIONS FOR USE THELIA 623 (WITH TIMECLOCK) AND THELIA 623NC (WITHOUT TIMECLOCK)



The instructions consist of two parts, Installation and Servicing Instructions and Instructions for Use, they should be handed to you by your installer on completion of the installation.

Important Notice

This boiler is for use with Natural Gas as distributed in the United Kingdom (G20) and cannot be used on any other gas.

Note. If the boiler has been set to burn any other type of gas your installer will tell you.

These instructions should be carefully followed for the safe and economical use of your boiler.

Once the pilot has been lit and the controls set, the boiler is automatic in operation.

The boiler is able to provide room heating as part of a central heating system and domestic hot water direct from a cold water supply, without the need for secondary storage.

Gas Safety (Installation and Use) Regulations.

In your interests and that of gas safety it is the law that ALL gas appliances are installed by a competent person in accordance with the above regulations.

Gas Leak or Fault

If a gas leak or fault exists or is suspected, turn the boiler off and consult the local gas undertaking or your installation/servicing company.

13032

13032

Hepworth Heating Ltd., Nottingham Road, Belper, Derbyshire. DE56 1JT

Technical Services Department : Telephone : Belper (0773) 828100

Electrical Supply

WARNING. This boiler must be earthed.

The boiler must be connected to a 240V~50Hz permanent supply.

Connection of the whole electrical system of the boiler and heating system controls to the electrical supply, must be through one common isolator.

Isolation should preferably be by a double pole switched fused spur box. The fused spur box should be readily accessible and preferably near to the boiler. It should be identified as to its use.

A fused three pin plug and shuttered socket outlet may be used instead of the fused spur box, provided that,

(a) they are not used in a room containing a bath or shower.

(b) both the plug and socket outlet comply with the current issue of BS1363.

To Connect a Plug

PVC flexible cable having a conductor size of 0.75mm² (24/0.20mm), to the current issue of BS6500 Table 9 must be used within the boiler casing to connect to the boiler.

The colours of three core flexible cable are:

Brown - live

Blue - neutral

Green/yellow - earth

As the marking on your plug may not correspond with these colours proceed as follows:

The cable coloured blue must be connected to the terminal marked "N" or black.

The cable coloured brown must be connected to the terminal marked "L" or red.

The cable coloured green/yellow must be connected to the terminal marked "E" "Green" or the earth symbol \perp , see diagram 1.

Boiler Clearances

The boiler should have the following minimum clearances for safety and maintenance.

50mm on each side of boiler

600mm in front of boiler

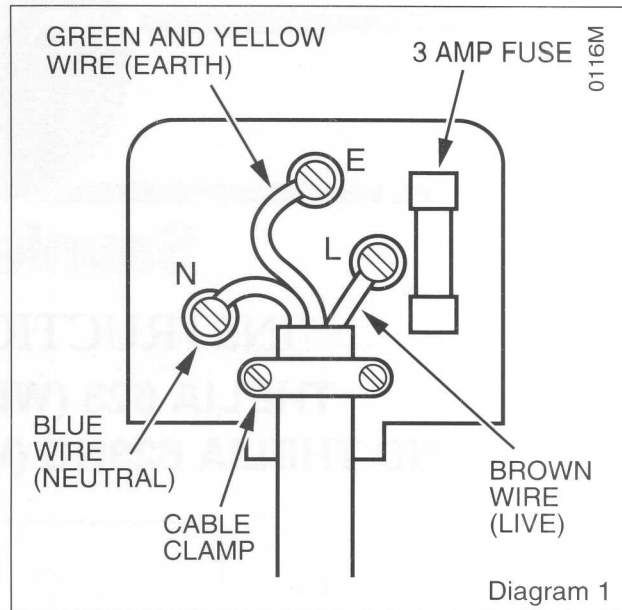
300mm below boiler

150mm above - back outlet flue

300mm above - top outlet flue

If the boiler is fitted in a cupboard or compartment do not obstruct any purpose made ventilation openings or use the cupboard for storage purposes.

A minimum distance of 100mm is required between the front of the boiler and the inside face of the door.



Boiler Controls

The control panel, located at the lower front of the boiler casing allows the boiler to be started, shutdown, controlled and monitored during use, refer to diagram 2. The panel opens down flat for access to the controls.

Flue

Do not obstruct the outside terminal of the boiler.

Note. At stand-by the fan on the boiler will run at low speed.

Starting the Boiler

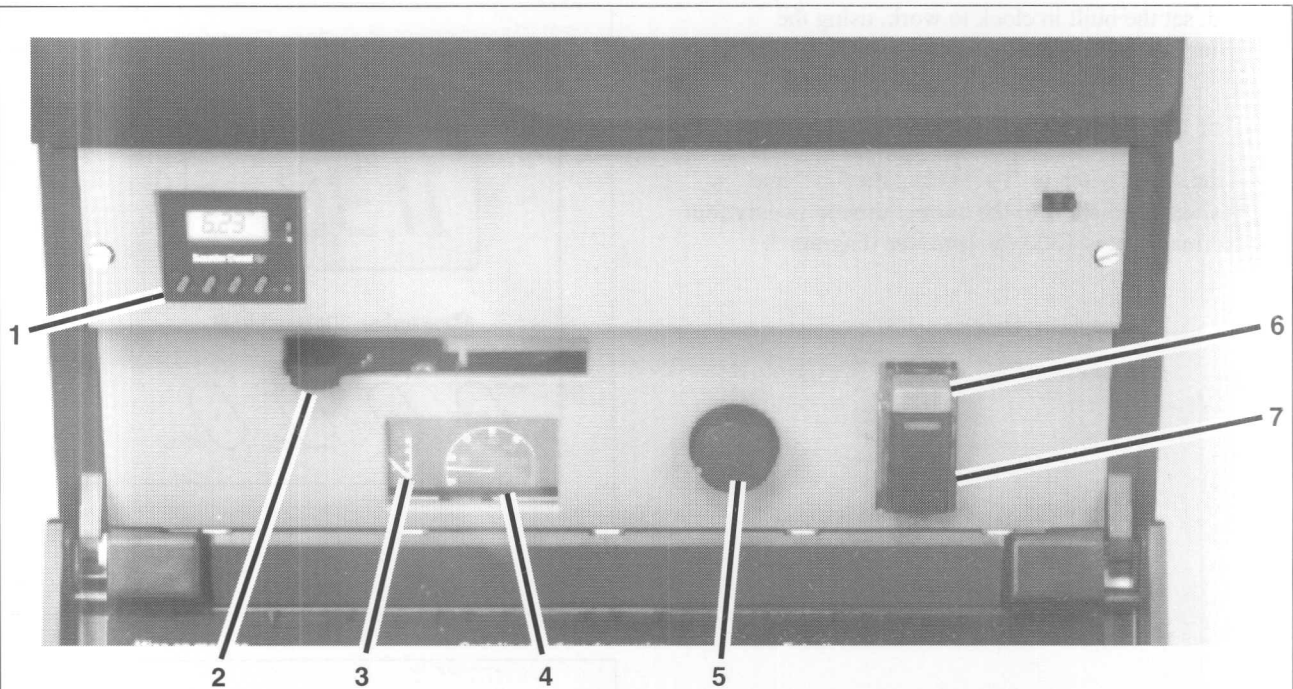
Before starting the boiler check that:

The gas meter tap is open, if using butane or propane check that valve on gas storage cylinder or tank is open.

The appliance gas service cock is open, see diagram 3.

The boiler is connected to the electrical supply and switched on.

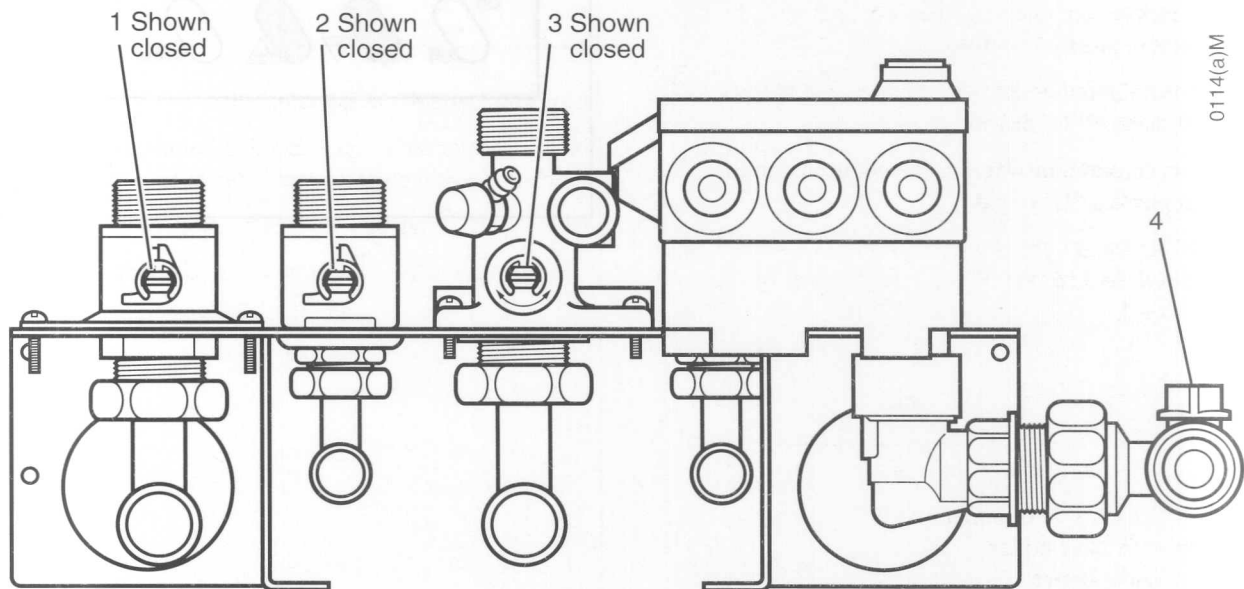
Instructions for Use



KEY:

- | | | | |
|---|-------------------|---|---|
| 1 | TIMECLOCK | 5 | BOILER THERMOSTAT |
| 2 | SELECTOR LEVER | | (To regulate central heating water temperature) |
| 3 | PRESSURE GAUGE | 6 | "OFF" PUSH BUTTON |
| 4 | TEMPERATURE GAUGE | 7 | "ON" PUSH BUTTON |

Diagram 2



0114(a)M

KEY:

- | | | | |
|---|-------------------------------|---|------------------------------|
| 1 | Isolating valve - C.H. Return | 2 | Isolating valve - D.H. Water |
| 3 | Isolating valve - C.H. Flow | 4 | Isolating valve - Gas supply |

Diagram 3

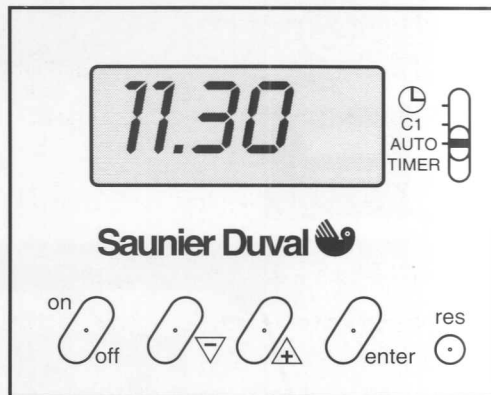
Instructions for Use

If fitted, set the built in clock to work, using the following instructions, see diagram 4.

To Set the Clock to the Current Time

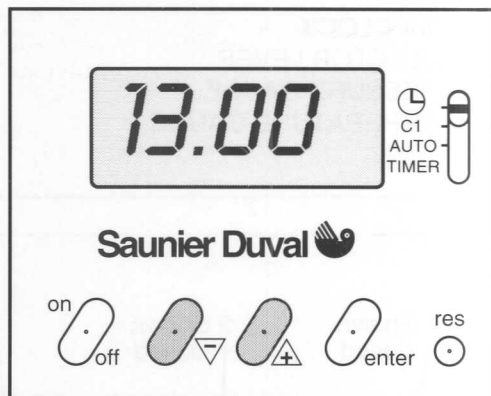
[Clock.gif](#)

Place the slide switch to "☉." Using the "▽" and "▲" buttons, set the display to the correct time in twenty four hour format, that is 1300 for 1pm, see diagram 5.



0111(a)M

Diagram 4



0111(b)M

Diagram 5

To Set the Programme "ON" and "OFF" Times

Place the slide switch to C1.

[Buttons.gif](#)

Using the "▽" and "▲" buttons set the first "ON" time.

Confirm this by pressing the "Enter" button, see diagram 6.

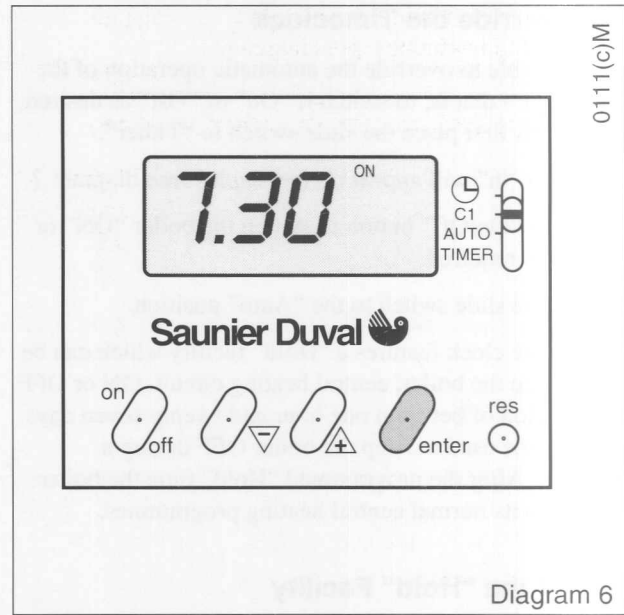
Using the "▽" and "▲" buttons set the first "OFF" time.

Confirm this by pressing the "Enter" button.

Repeat this procedure for the remaining five "ON" and "OFF" times.

Note. The number of "ON" and "OFF" times can be programmed with a minimum of one and a maximum of six. When the desired number of "ON" and "OFF" periods have been set place the slide switch to "AUTO." The display will show "ON" or "OFF" only, there is no time display.

The programmed times can be checked at any time by moving the slide switch from "Auto" to "C1". Successive presses of the "Enter" button will then display the "ON" and "OFF" times. Always return the slide switch to "Auto" to resume normal operation.



0111(C)M

Diagram 6

To Override the Timeclock

It is possible to override the automatic operation of the timeclock - that is, to switch it "On" or "Off" as desired. To do this first place the slide switch to "Timer".

The letter "h" will appear on the display, see diagram 7.

Press the "On/Off" button to switch the boiler "ON" or "OFF" as required.

Return the slide switch to the "Auto" position.

Note. The clock features a "Hold" facility which can be set to keep the boiler, central heating circuit, ON or OFF for a period of between one hour and twenty seven days. This can be used to keep the boiler OFF during a holiday. After the programmed "Hold" time the boiler reverts to its normal central heating programmes.

To Set the "Hold" Facility

Place the slide switch to "Timer".

The letter "h" will appear on the display, see diagram 7.

Using the "▽" and "△" buttons set the "Hold" time.

Note. After a "Hold" period of twenty three hours has been exceeded the "h" will change to a "d". It is possible to set it to "hold" for up to twenty seven days, see diagram 8.

Using the "On/Off" button set the boiler to the required operation, that is if the boiler is to stay "Off" for the "Hold" period set the display to "Off".

Place the slide switch to "Auto". After the programmed "Hold" time the boiler will revert to normal timed operation.

Now continue and check that the central heating system is full of water, even if you only want the boiler to provide domestic hot water.

The pressure gauge reads at least 1bar. If not the system must be pressurised by a competent person.

The central heating flow and return valves are open, see diagram 3.

The selector lever is in the left hand, domestic hot water only, position.

To Start the Boiler

Depress the black "ON", ignition, push button and keep pushed in.

Note. Air may be present in the gas pipework and the following operations may need to be repeated.

On pressing the "ON" button, the fan will be heard to run, for about 10 seconds before ignition, purging the sealed combustion chamber.

Check that pilot is alight by looking through viewing window.

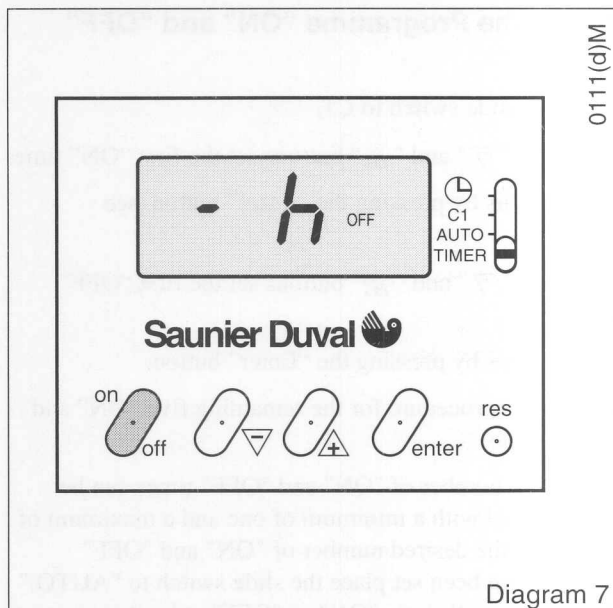


Diagram 7

0111(d)M

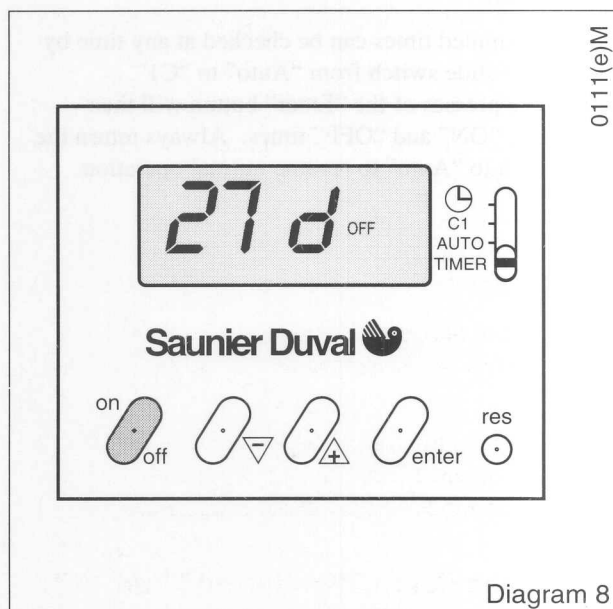


Diagram 8

0111(e)M

Wait for 10 seconds after the pilot has lit before releasing black button.

WARNING. Should the pilot fail to remain alight or go out for any reason, intentionally or unintentionally, always wait at least 3 minutes before trying to relight the pilot.

Domestic Hot Water

With the selector lever set to the left the boiler will only supply domestic hot water.

Central Heating and Domestic Hot Water

For central heating and domestic hot water the selector switch should be set to the right.

The control thermostat knob should be turned to between "MIN" and "MAX", check temperature on temperature gauge.

Check that the built in clock is "On" and set to the correct time.

Check that all remote controls are calling for heat.

Note. The pressure gauge will register, when the system is working, between 1.5 to 2.0bar.

With the selector switch in the central heating/domestic hot water position domestic hot water will have PRIORITY.

Adjustment of the control thermostat knob will NOT have any effect on the temperature of the domestic hot water.

Temperature control for domestic hot water is done by the amount of water FLOWING FROM THE TAP, that is, the greater the flow the lower the temperature.

To Stop the Central Heating and Turn Off Boiler, Leaving Pilot Alight.

Move the selector switch to the left. The boiler will now only provide domestic hot water on demand.

The pilot light remains alight.

Complete Boiler Shut Down

Push in the red "OFF" button and the pilot will go out.

Switch off the electrical supply.

To relight, follow the full lighting operation given above, including, if fitted, resetting the clock.

Servicing

To ensure the continued efficient and safe operation of the boiler it is recommended that it is checked and serviced at regular intervals. The frequency of servicing will depend upon the installation conditions and usage, but in general once a year at the end of the heating season should be enough.

It is the law that servicing is carried out by a competent person.

Protection Against Freezing

If the boiler is to be out of use for any long periods during severe weather conditions, it is recommended that the whole system, including the boiler, be drained off to avoid the risk of freezing. If in doubt consult your installation/servicing company.

Draining and Filling

CAUTION. This boiler works in a pressurised system which must only be drained and filled by a competent person.

Note. If there is persistent loss of system pressure, indicated by the pressure gauge YOU MUST CONTACT YOUR INSTALLER.

Safety Valve

CAUTION. A safety valve with a discharge pipe is fitted to this boiler.

The valve **MUST NOT BE TOUCHED** except by a competent person. If the valve discharges at any time, switch the boiler off and isolate it from the electrical supply. Contact your installation/servicing company.

Cleaning

WARNING. The boiler contains metal parts (components) and care should be taken when handling or cleaning, with particular regard to edges.

The boiler casing can be cleaned with a damp cloth then a dry cloth to polish.

Do not use abrasive or solvent cleaners.

Boiler Casing

CAUTION. Do not remove or adjust the casing in any way, as incorrect fitting may result in faulty operation. If in doubt contact your installation or servicing company or the local gas undertaking.

Service

To ensure the continued efficient and safe use of the boiler it is recommended that it is checked at regular intervals. The frequency of checks should depend upon the installation conditions but at least once a year at the end of the heating season should be enough.

It is the law that servicing is carried out by a competent person.

Protection Against Freezing

It is the boiler's responsibility to ensure the safe and efficient operation of the system. It is the user's responsibility to ensure the boiler is protected against freezing. It is the user's responsibility to ensure the boiler is protected against freezing.

Draining and Filling

CAUTION: This boiler works at a pressure which must only be drained and filled by a competent person.

It is the user's responsibility to ensure the boiler is protected against freezing. It is the user's responsibility to ensure the boiler is protected against freezing.

Safety Valves

CAUTION: A safety valve with a discharge pipe should be fitted.

The valve MUST NOT BE TOUCHED. It is the user's responsibility to ensure the boiler is protected against freezing. It is the user's responsibility to ensure the boiler is protected against freezing.

Cleaning

WARNING: The boiler contains metal parts (components) and care should be taken when cleaning with suitable agents in order to avoid damage.

The boiler can be cleaned with a suitable cleaning agent.

The boiler should be subject to regular cleaning.

Color Coding

CAUTION: The boiler contains metal parts (components) and care should be taken when cleaning with suitable agents in order to avoid damage.

Controls

To ensure the continued efficient and safe use of the boiler it is recommended that it is checked at regular intervals. The frequency of checks should depend upon the installation conditions but at least once a year at the end of the heating season should be enough.

Hot Water

It is the law that servicing is carried out by a competent person.

Heating and Domestic Hot Water

It is the user's responsibility to ensure the boiler is protected against freezing. It is the user's responsibility to ensure the boiler is protected against freezing.

It is the user's responsibility to ensure the boiler is protected against freezing. It is the user's responsibility to ensure the boiler is protected against freezing.

It is the user's responsibility to ensure the boiler is protected against freezing. It is the user's responsibility to ensure the boiler is protected against freezing.

It is the user's responsibility to ensure the boiler is protected against freezing. It is the user's responsibility to ensure the boiler is protected against freezing.

It is the user's responsibility to ensure the boiler is protected against freezing. It is the user's responsibility to ensure the boiler is protected against freezing.

It is the user's responsibility to ensure the boiler is protected against freezing. It is the user's responsibility to ensure the boiler is protected against freezing.

It is the user's responsibility to ensure the boiler is protected against freezing. It is the user's responsibility to ensure the boiler is protected against freezing.

It is the user's responsibility to ensure the boiler is protected against freezing. It is the user's responsibility to ensure the boiler is protected against freezing.

It is the user's responsibility to ensure the boiler is protected against freezing. It is the user's responsibility to ensure the boiler is protected against freezing.

Control Heating and Turn Off

It is the user's responsibility to ensure the boiler is protected against freezing. It is the user's responsibility to ensure the boiler is protected against freezing.

It is the user's responsibility to ensure the boiler is protected against freezing. It is the user's responsibility to ensure the boiler is protected against freezing.

Boiler Shut Down

It is the user's responsibility to ensure the boiler is protected against freezing. It is the user's responsibility to ensure the boiler is protected against freezing.

It is the user's responsibility to ensure the boiler is protected against freezing. It is the user's responsibility to ensure the boiler is protected against freezing.

13032

Because of our constant endeavour for improvement details may vary slightly from those in these instructions.